

MONTHLY MEMBERSHIP PROGRESS REPORT

LOCATION INDIA

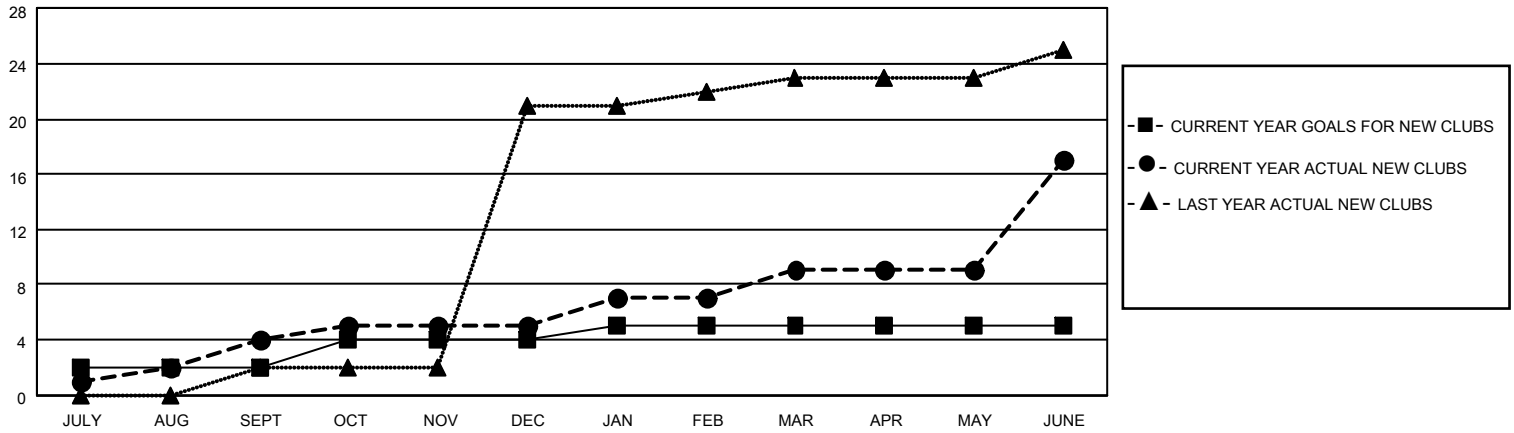
District 321A3

Results as of: 6/30/2022

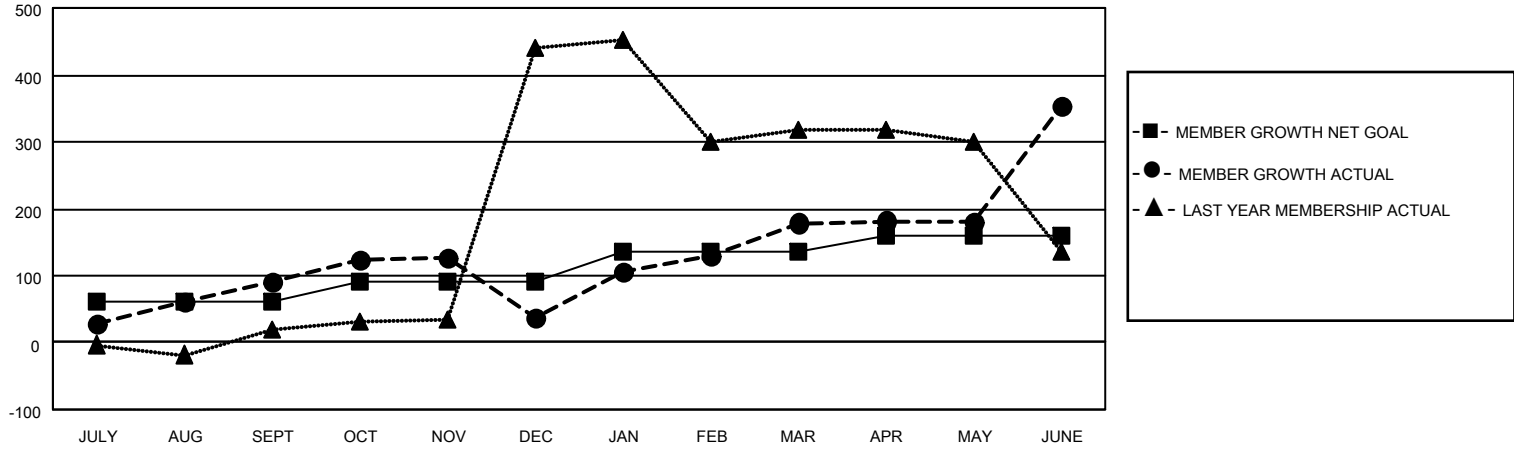
Clubs			
RESULTS FOR 2021-2022			
QUARTER	NEW CLUB GOAL	NEW CLUBS	DROPPED CLUBS
JULY/AUG/SEPT	2	4	2
OCT/NOV/DEC	2	1	2
JAN/FEB/MAR	1	4	0
APR/MAY/JUNE	0	8	1

Members			
RESULTS FOR 2021-2022			
QUARTER	MEMBER GROWTH NET GOAL	MEMBER GROWTH ACTUAL	DROPPED MEMBERS ACTUAL (including transfers)
JULY/AUG/SEPT	60	150	59
OCT/NOV/DEC	30	70	115
JAN/FEB/MAR	45	168	21
APR/MAY/JUNE	25	419	235

GOALS AND ACTUAL NEW CLUBS CUMULATIVE



GOALS AND ACTUAL MEMBERS CUMULATIVE



DROPPED CLUBS: 5

83 CLUBS OF 124 ADDED 1 OR MORE NEW MEMBERS

GENDER DISTRIBUTION

MALE	1,799 (74.99%)
FEMALE	600 (25.01%)
NON BINARY	0 (0.00%)
PREFER NOT TO ANSWER	0 (0.00%)

DROPPED MEMBERS

[CLICK HERE FOR CUMULATIVE MEMBERSHIP DATA](#)

DECEASED	7
CLUB CANCELLED	54
OTHER	369
TOTAL	430

TOTAL FAMILY UNIT MEMBERS 1,298

FAMILY MEMBERS PAYING HALF DUES 775